



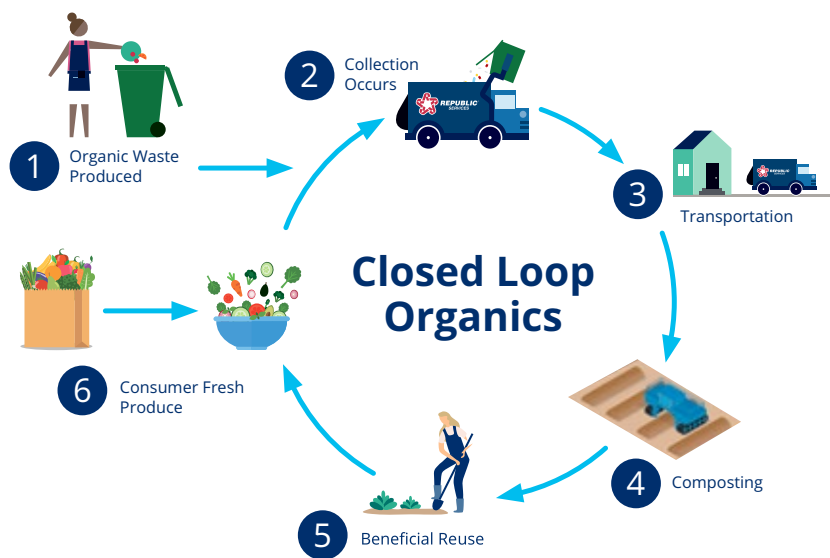
City of Seal Beach Recycling & Waste Newsletter



WINTER 2022

800.299.4898

Organics Recycling Changes Coming Across California



California Senate Bill (SB) 1383, which was signed into law in 2016, establishes a goal of reducing the volume of organic waste disposed in California landfills by 75% by 2025. SB 1383 builds on and expands the requirements of Assembly Bill (AB) 1826, which affects all businesses that generate 2 or more cubic yards of waste per week and multi-family properties with five or more units. Under SB 1383, all businesses and residential properties, regardless of size, will be required to participate in organics recycling programs.

Why Is It Important to Recycle Organics?

Currently, two-thirds of this material is landfilled. As organics break down in landfills, they create methane, a powerful greenhouse gas the state of California has identified as a factor in climate change.

What Happens Next?

New organics recycling programs will roll out in 2022 across the state of California. Every city will develop a unique food waste and green waste recycling program in the coming months. More information will be provided to residents and businesses soon.

Residents

- Recycle all clean, dry paper in your curbside recycling cart. This includes cardboard and other boxes, envelopes, junk mail, magazines, newspaper, office paper, school papers, paperback books, paper grocery bags, shredded paper (bagged) and wrapping paper with no metal. Also recycle metal cans, glass bottles and jars, and plastic bottles, jugs and containers in the same cart.
- Reduce landscape debris by letting grass clippings drop back onto the lawn as you mow and by composting in your backyard. In addition to landscape trimmings and leaves, you can also compost fruit and vegetable scraps. Compost helps create healthier soil that uses water more efficiently, leading to beautiful and productive gardens.
- Use your yard waste cart for limbs, branches, leaves, grass clippings,

Reduce the Risk of Truck and Facility Fires

Properly Dispose of Batteries, Hazardous Chemicals and Electronics

Over the past year, we've experienced some truck and facility fires because rechargeable batteries and flammable materials were improperly disposed with recyclables or trash. When a fire occurs in a truck, it is extremely dangerous for the driver, and it also puts surrounding vehicles, pedestrians and properties at risk. At a facility where recyclable paper and plastics are moving rapidly along conveyors, a fire can quickly spread, endangering workers and causing costly facility shutdowns and repairs.

You can help reduce the risk of fires by properly disposing of all household batteries and hazardous waste. Here's what you need to do:

- When you remove batteries from devices and prepare to discard them, tape over the terminal ends with clear packing tape. Bag your batteries in a sealable plastic bag.
- Separate household hazardous chemicals, including pesticides and fertilizers, oil-based paint, automotive fluids, pool chemicals



A lithium-ion battery sparked this waste truck fire that closed a city street and put surrounding properties at risk in Bellevue, Washington. (Photo courtesy of Bellevue Police Department and U.S. EPA)

and similar items, from other waste. Set aside old electronic devices, such as computers, televisions, laptops, tablets, smartphones and wireless speakers.

- Do not place any of these items into your recycling or trash carts or dumpsters!
- Deliver batteries, household chemicals and electronics to one of the Orange County Household Hazardous Waste Collection Centers. These items are accepted at no charge. For locations and other details, visit OCLandfills.com/hazardous or call **714.834.6752**.

- weeds, other plant material and small scrap wood (no painted or treated wood). Branches and wood must be no more than 4 inches in diameter and no more than 4 feet long. Palm fronds, cacti and other succulents, rocks, soil, pet waste, recyclables and trash are not accepted in the yard waste cart.
- Watch for details about collections for food scraps and food-soiled paper (like coffee filters, greasy pizza boxes, paper napkins, etc.) to begin soon.
- If you live in an apartment or condominium community with shared dumpsters, be sure to recycle your clean, dry paper with bottles, jugs and containers in the blue recycling dumpster or cart.

Businesses

- Recycle clean, dry paper and cardboard in your recycling

- dumpster or cart. Under Assembly Bill 341, many businesses and multi-family properties are already required to recycle paper, along with plastic bottles and jugs, glass bottles and jars, and metal cans.
- Beginning January 1, 2022, depending on the size of your business, you may be required to participate in a food recovery and donation program for edible food. SB 1383 also establishes a goal of increasing edible food recovery from businesses by 20% by 2025. Donate excess food to food pantries or other food rescue organizations.
- Contact Republic Services at **800.299.4898** to ensure you have properly sized carts or dumpsters and the correct type and frequency of collection services in place to meet the requirements of SB 1383.

PRST STD
US POSTAGE PAID
GREENFIELD, IN
PERMIT NO 220

EDDM

*****ECRWSS
POSTAL CUSTOMER
LOCAL

Save Money by Reducing Food Waste



As you create your shopping list, check your refrigerator and pantry to see what you already have on hand. Using a list while you shop reduces impulse purchases and return trips to the store for forgotten items, saving you time and money.

How much food do Americans throw away? The short answer is “too much.” According to Rosa Rolle, an expert on food waste and loss at the United Nations Food and Agriculture Organization, we buy too much food and we don’t finish our plates, partly because we spend a far smaller share of our income on food. Simply put, many Americans can afford to toss out food and still make ends meet. However, an average family of four could save up to \$1,500 a year just by not wasting food. Wouldn’t that be nice?

Most Americans throw out food when it starts to look or smell bad. Dairy, produce and meats are the most commonly tossed items because they spoil most quickly. Throwing away food wastes not only hard-earned money but also valuable resources, such as water, fuel and supplies used to grow, transport and market the food before it reaches your home.

Worldwide, about one-third of the food we grow is wasted. As a result, food waste is the single largest category of waste in landfills. Instead of feeding people, nutritious food is sitting in

landfills and generating methane, a greenhouse gas. In wealthy countries like the United States and Canada, around 40% of food is thrown out by consumers like us.

We can do better. The Environmental Protection Agency and United States Department of Agriculture have tools to help you start. Learn more at [EPA.gov/sustainable-management-food/food-too-good-waste-implementation-guide-and-toolkit](https://www.epa.gov/sustainable-management-food/food-too-good-waste-implementation-guide-and-toolkit) and [USDA.gov/foodlossandwaste](https://www.usda.gov/foodlossandwaste).

Tips to Reduce Food Waste

- Buy only the food you need.
- Think before you order at restaurants. What will you eat at the table and what will you take home as leftovers?
- Learn how to store food correctly. Food lasts longer than you think.
- Know the difference between the “sell by,” “use by” and “best by” dates posted on products.
- Be creative in meal planning and utilizing leftovers.
- Don’t be afraid to offer excess food items to neighbors, friends or food pantries.

Pandemic Recycling Data Shows Big Spikes in Cardboard Boxes, Aluminum Cans, Bottles

With at-home consumption up significantly during the last year and a half, Republic Services reminds consumers to properly recycle e-commerce and beverage containers

Republic Services saw significant increases in the recycling of cardboard boxes, aluminum cans and plastic and glass bottles over the last year, reflecting a shift in consumer behavior to more at-home consumption. All of these high-demand materials can be put back into the circular economy through proper recycling methods.

“The pandemic’s effects were clearly seen in home recycling bins,” said Pete Keller, vice president of recycling and sustainability. “We know that Americans are willing to recycle and are becoming more aware of their impact on the environment, so it’s vital that we continue to help consumers understand what can and cannot be recycled.”

Since the beginning of the pandemic, online shopping has risen to new heights — and those cardboard boxes have shown up in recycling bins, with a

63% increase in residential cardboard in some areas. In addition, households consumed more food and beverages at home, resulting in significant increases in recycled aluminum (17%), glass (13%) and plastic bottles (7%).

Organic waste, which includes food and yard waste, also experienced a major increase, as people cooked and did yard work while at home over the last year. Republic Services processed 20% more food and yard waste in 2020 and recycled this organic material into more than half a million tons of nutrient-rich compost.

Recycling is a simple way that everyone can be more sustainable in their daily lives, and it’s important to know how and what to recycle. Visit [RecyclingSimplified.com](https://www.RecyclingSimplified.com) for recycling tips, videos and other materials, as well as recycling curriculum for educators.



Large Items to Dispose?

Don’t Dump Them — Call Us

Furniture, old appliances and electronics are among the most common items illegally dumped along roadways, in parks and on vacant lots. There is no need to dump these items improperly. Republic Services provides residents with a convenient, weekly pickup option for bulk items and electronics. By appointment, Republic Services provides pickup for large items at the curb. To schedule this service, simply call Republic Services Customer Service at **800.299.4898** at least 24 hours before your regular collection day to request a “bulk item pickup.” Single-family residents may dispose of two bulk items per year at no extra cost. Additional items will be collected for a fee, or you can rent a temporary dumpster for a larger cleanup.

When you do spot an illegal dump site, don’t ignore it. Instead, note the location and report it to the city. If you see someone dumping illegally, do not confront them. If possible, discreetly take a photo of the activity. Write down a description of the person, as well as vehicle make, color and license plate number. Report illegal dumping to the City of Seal Beach Maintenance Division at **562.431.2527, ext. 1414**. Working together, we can keep our city looking good for residents and visitors.



ONLY place these items in the recycling cart



Photo courtesy of Mack Trucks



Electric Trucks Reduce Emissions and Provide Quieter Service

Republic Services achieved a significant fleet electrification milestone in 2020, with the delivery of our first fully electric collection truck. Developed in partnership with Mack Trucks, the electric truck pilot began trials on residential collection routes in North Carolina to test range, functionality and capacity. We are actively working with multiple suppliers, including Mack and Peterbilt, to transition away from fossil fuel vehicles. Additional electric trucks entered service over the course of 2021.

Electrification isn't limited to our trucks on the road. On the heavy equipment

side, we've begun evaluating electric-drive bulldozers at our landfills, which offer significantly improved fuel economy. In the coming year, we'll also be testing electric forklifts at our recycling centers.

"Our destination is clear — electrification is the future," said Jon Vander Ark, president and chief executive officer of Republic Services. "Customers are excited about its potential, it's a much quieter experience for our drivers and communities, and most importantly, it significantly reduces emissions."

How to prepare your recyclables

Empty. Clean. Dry.™
Keep all recyclables free of food and liquid

Don't bag it
Never put recyclables in containers or bags

NEVER place these items in the recycling cart

Plastic Bags & Wrappers	Clothing & Shoes	Tools	Electronics & Batteries	Medical Waste
Soiled Paper	Greasy Pizza Boxes	Food	Construction Waste	Yard Waste
Styrofoam		Toys		Diapers
				Scrap Metal

Learn more at [RecyclingSimplified.com](https://www.RecyclingSimplified.com)

Recycling *Simplified*



We'll handle it from here.™

Customer Access to Recycling in Food Service

Assembly Bill (AB) 827, which was signed into law in 2019, requires that businesses, such as restaurants and food courts, make composting and recycling receptacles accessible to customers for materials purchased on their premises. AB 827 works collectively with commercial recycling and organics recycling mandates to maximize landfill diversion and reduce greenhouse gas emissions. If you provide disposal containers for customers, you must supply visible, easily accessible and clearly marked bins for recyclables and organics (food and food-soiled paper) next to trash bins. Full-service restaurants must provide properly labeled bins for recyclables and compostables next to the trash containers used by kitchen and dining room staff.



Republic Services provides technical assistance to ensure businesses are compliant with all of California's recycling legislation. To set up a recycling program that meets your property's recycling and solid waste needs, call **800.299.4898** or visit **RepublicServices.com**.



We Work for Earth. You Can, Too!

Nationwide, Republic Services employs more than 35,000 people who make 5 million daily pickups and operate more than 300 facilities, including recycling centers, organics processing operations and landfills. Our highly skilled team members are passionate about the work they do to protect our Blue Planet® and the communities they serve, which are typically also the places they call home.

If you would like to stay close to your family and friends and advance in a well-paying career, consider joining our team at Republic Services. Available jobs in our region include drivers, equipment operators, mechanics, shop technicians, material sorters, laborers, customer service specialists, dispatchers, recycling coordinators, sales representatives, office support staff members and more. To see and apply for open positions, visit **RepublicServices.jobs**.



Holiday Collection Schedule

Recycling, yard waste and trash collection service on and after these holidays will be delayed by one day:

- Memorial Day
- Independence Day
- Labor Day
- Thanksgiving
- Christmas
- New Year's Day

Putting a Stop to Illegal Dumping

We have seen an increase in illegal dumping in our area over the past few months as more residents were home and clearing out items they no longer needed. Not only are illegally dumped items unsightly, but they can also create health and safety hazards and decrease property values. Here's what you can do to help prevent and clean up illegal dumping:

- When you see litter, pick it up. An area that is clean and clear of litter is more likely to stay that way.
- Use appropriate carts for all recycling, trash and yard waste.
- Don't set large items that need to be disposed, such as appliances or furniture, outside until after you make a call to schedule a bulk-item pickup.
- When you spot an illegal dump site, don't ignore it. Instead, note the location and report it to your city.
- If you see someone dumping illegally, do not confront them. If



Credit: Khosrorok | iStock | Getty Images Plus

- possible, discreetly take a photo of the activity. Write down a description of the person and/or vehicle, as well as the license plate number. Call your police department's non-emergency number to report this activity.
- Take part in community cleanup programs to help keep your city looking good for residents and visitors.

Collection Day Do's and Don'ts

You might have driven down the street on collection day and noticed carts with lids flipped open and recyclables or trash reaching toward the sky. You might have even done this at your house. You can probably imagine that these overfilled, open carts result in some litter. But did you also know that sometimes the trucks can't empty them?

With our automated collection system, a mechanical arm reaches out from the truck to grab and lift your carts. When the lid is closed, as it should be, the arm smoothly lifts the cart up and over the top of the truck. Once above the truck, the arm tips the cart, much as your wrist tips when you drink from a glass you are holding. Gravity does the rest. When a cart is overfilled and the lid is left open, items sticking out of the top may be squeezed out onto the ground, may get caught as the cart is lifted or may cause the cart to tip and spill onto the ground. Help keep your neighborhood tidy and make sure your curbside carts can be properly emptied. Follow these simple tips:

DO

- Close the lids on all of your carts.
- Bag waste that will be placed into your trash cart.
- Toss only LOOSE recyclables into the recycling cart.
- Place only recyclables into the recycling cart. If you aren't sure what is recyclable, visit Local.RepublicServices.com/site/los-angeles-ca/seal-beach.
- Break down and flatten boxes before recycling. If needed, cut cardboard into pieces no larger than about 18 by 18 inches.
- Empty food and beverage containers. Wipe or rinse out food residue, as needed.
- Place carts at least 2 feet away from each other and from mailboxes, telephone poles or parked cars.
- Roll carts to the curb by 6 a.m. on your collection day. If you aren't an early riser, set out your carts the night before collection.
- Place carts with the wheels and handles facing your house.

DON'T

- Don't leave the cart lids open.
- Don't place bagged waste on top of your trash cart.
- Don't bag your recycling.
- Don't overfill carts. Save extra materials to be placed in carts the following week.
- Don't put any of these items into your recycling cart: plastic bags; food; takeout coffee cups; clothing and textiles; hoses and cords; tissues, napkins and paper towels; or household batteries.



Credit: disqis | iStock | Getty Images Plus

Safety First

Please remember to stay alert and slow down around recycling and waste trucks in the community. There are simple steps you can follow to keep yourself, your family members and our workers safe.

- Slow down and stop, if necessary, to allow workers to do their jobs safely.
- Check for traffic approaching from the opposite direction, and always look out for workers before attempting to pass a truck.
- Avoid distractions like texting, talking on the phone, adjusting your entertainment system or programming your GPS while driving near a truck.



City of Seal Beach
SealBeachCA.gov
 562.431.2527
AskCityHall@sealbeachca.gov



Support Local Businesses
SealBeachChamber.org

We want your suggestions, questions and comments!

Republic Services
 12949 E. Telegraph Road
 Santa Fe Springs, CA 90670
 800.299.4898
Local.RepublicServices.com/site/los-angeles-ca/Seal-Beach
 © 2022 Republic Services, Inc.